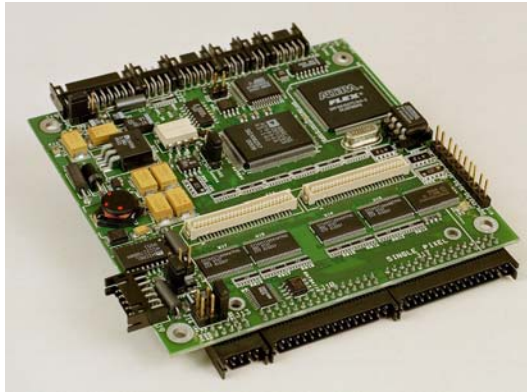


## Video Processor – VP3



- Digitizes computer-generated video sources
- Drives commercial AMLCD's and Inverters
- Adjustments and re-configuration in-the-field via utility software
- Supports up to UXGA displays
- Supports inverter brightness adjustments
- Output Pixel clock and frame rate must equal input
- PC/104 form factor: , 3.6" x 3.8"
- Standard Input: Analog RGB
- Standard Output: Parallel Digital
- Optional Outputs: LVDS, TMDS
- single and dual channel

The VP3 Video Processing Module provides direct connection from analog video sources to a wide range of commercial digital AMLCD display modules.

**Features:** The VP3 capabilities include:

- digitization of computer-generated video sources with separate syncs or sync-on-green
- incoming video gain and offset adjustments
- programmable power sequencing to panel
- fine phase clock adjustment for pixel sampling
- interfaces to most common inverters
- remote interface for both set-up and operational control

**Simplest Solution:** For single format video sources, the VP3 offers a simple, small form factor, cost-effective solution to perform the video analog to digital conversion, inverter interface, and panel power sequencing.

**Our customers receive Westar's VP3 Configuration utility. This utility allows you to:**

- configure a VP3 for a unique application,
- change the Built-In Operating System (BIOS) to account for a new video requirement or a new target display,
- make adjustments to optimize the VP3 for a particular installation,
- and more

*If this sounds confusing, don't worry, our support team will help you master the configuration utility, or we can set up the VP3 for you at the factory!*

### VP3 Operation

Typically, the VP3 operates as follows:

1. Upon power up, the VP3 configures itself based on its internal BIOS
2. When a valid video signal is detected, the VP3 applies power to the display per the power sequencing defined in the set-up BIOS.
3. When loss of video is detected, the VP3 executes the display power down sequence

### How to get started

Please contact us at (636) 300-5164. We will discuss your requirements and respond with a quotation

### VP3 Configuration Utility:

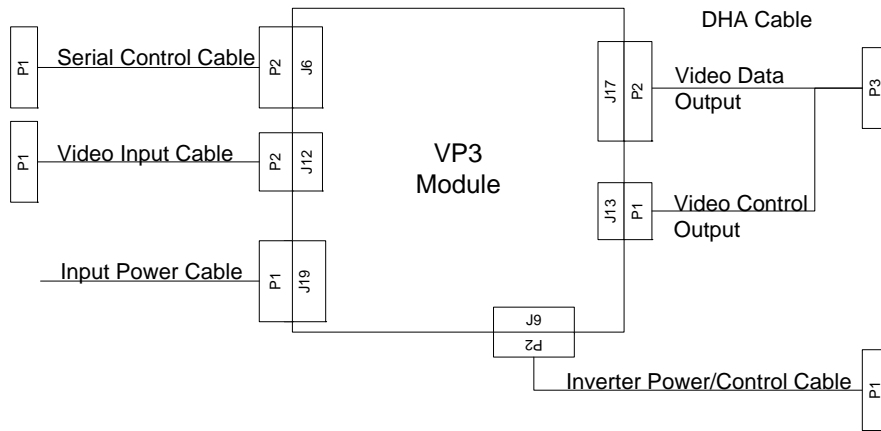
The VP3 Configuration utility is supplied to VP3 customers. VP3 Configuration is installed on Windows XP platforms, and connects to the VP3 via an available RS-232 serial cable.

The utility uses a 3-step process to set up the VP3:

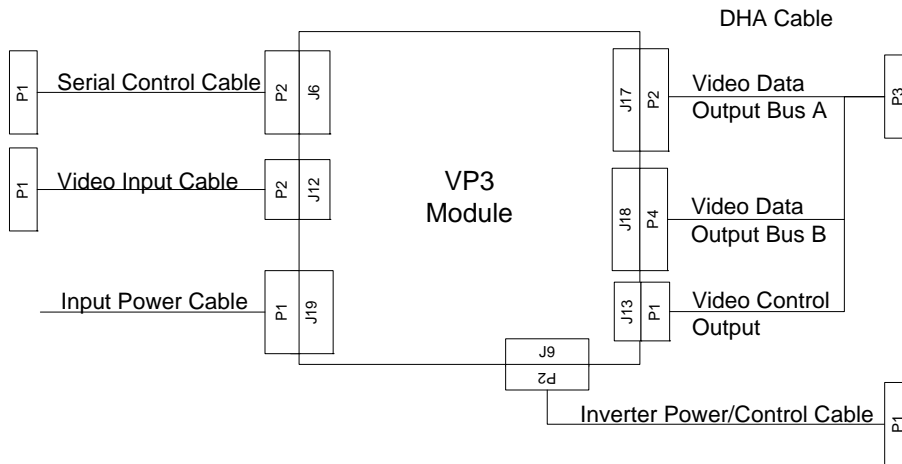
1. Input / Output definition
2. Power Sequence definition
3. Adjustments

<b>Physical Dimensions</b>	3.6" x 3.8" x 0.6" (approx)
<b>Temperature Range</b>	Operating: 0° C to +50° C; Storage: -20° C to +70° C
<b>Video Inputs</b>	Computer - Up to UXGA resolutions @ 60Hz - Analog Input (162 MHz) - Standard and custom timing - Syncs (Digital Separate, Digital Composite, Analog Composite)
<b>Video Outputs</b>	single (24 bit) or dual (48 bit) bus panels Pixel rate single = 108 MHz; Pixel rate dual = 162 MHz
<b>Input Power</b>	+12 VDC, 1.5 Amp typical when driving XGA panel and inverter
<b>Control Interface</b>	RS-232
<b>Ordering Information</b>	VP3 (Standard Configuration)

### Typical connections



Typical connection for a VGA or SVGA display



Typical connection for a XGA or SXGA display