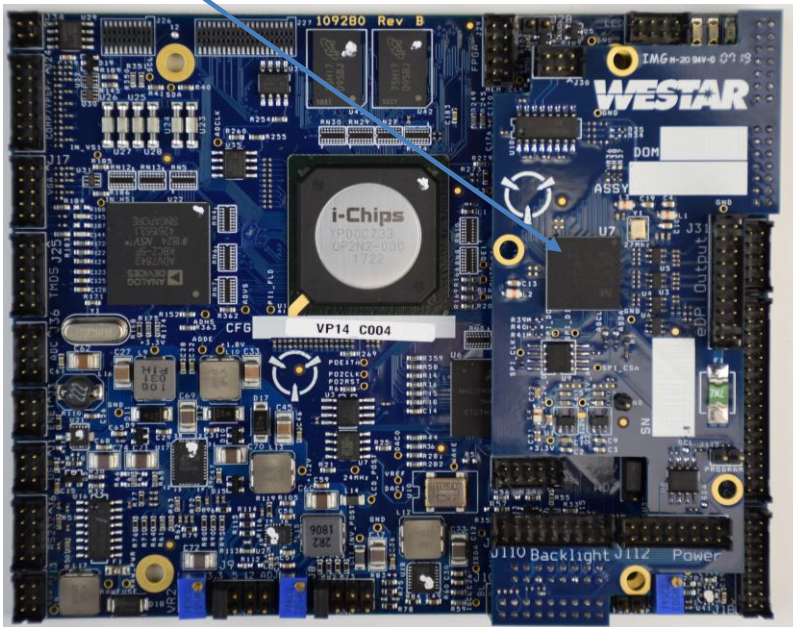


110732 eDP out Mezzanine for VP14

- Mezzanine connects directly to Westar VP14 LCD controller
- Converts LVDS video to eDP video (up to 4 lanes)
- Operates at up to 1080P/WUXGA/UXGA resolutions
- Does not support DisplayPort dual-mode (DP++, HDMI)
- Re-timing or re-sizing is performed on the VP14 LCD controller.
- Feed-through connectors for VP14 J10 (Backlight Controller I/F) and J12 (Auxiliary I/O)
- VP14 parallel video output still accessible with mezzanine installed

Figure 1: 110732 mounted on VP14



J31 DP Output Connector
DF11-20DP-2DSA (Hirose)
Mates with DF11-20DS-2C (Hirose)

Mating Contact: DF11-2428SC (Hirose)

Pin	Description
1/2	Link 3 P/N
3/4	Ground
5/6	Link 2 P/N
7/8	Link 1 P/N
9/10	Ground
11/12	Link 0 P/N
13/14	Aux CH P/N
15	No Connect
16	Ground
17	Hot Plug Detect
18	No Connect
19/20	DP Pwr +/- (3.3V, 500mA)

Application:

The 110732 is a simple, low-cost way to add eDP output capability to the Westar VP14 LCD controller. The 110732 converts LVDS video signals to eDP. The VP14 supplies power and eDP control commands to the 110732.

Westar integration specialists will help design the eDP cable and the VP14 Configuration file for your eDP panel. Please do not hesitate to contact us about your display application.

Order Configuration:

110732 eDP out Mezzanine for VP14

Supporting Documentation.

Please contact Westar for additional information on the 110732