

EZblend™ Video Combiner



Resolutions up to UXGA

Alpha blend, RGB Key, HSV Key, Windowing, Split Screen, PIP, programmable borders, color substitution and more

EZsetup utility supports user-defined:

- ✓ input and output timing and resolutions
- ✓ input areas of interest
- ✓ blending schemes

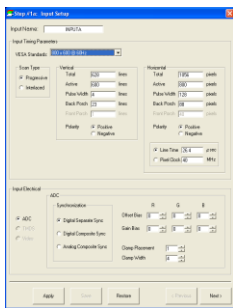
Available in 1U rack enclosure (standard) or optional benchtop enclosure (121 only)

EZblend 121 One channel (2 inputs and 1 output)

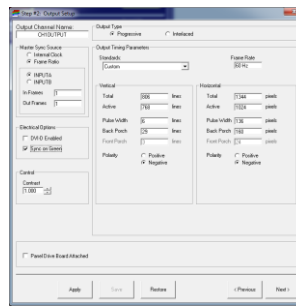
EZblend 221 Two channels (each 2 inputs and 1 output)

I/O: Analog RGB (interlaced or non-interlaced), TMDS

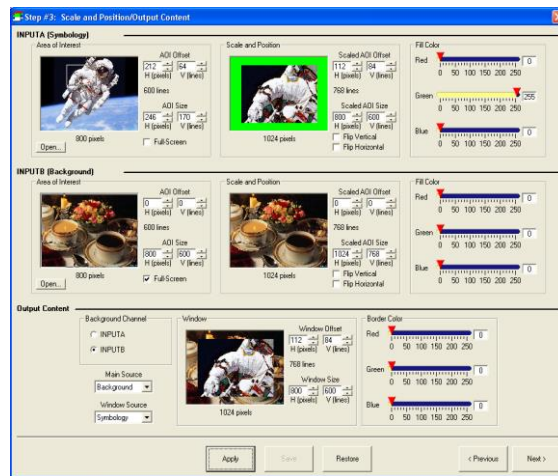
Setup the EZblend™ in five (5) steps using the EZsetup™ utility.



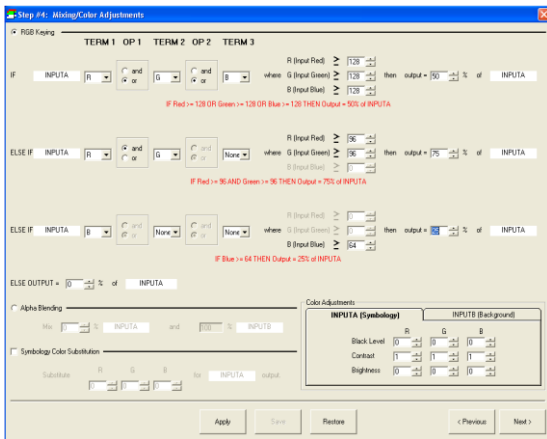
Step #1 Define input timing



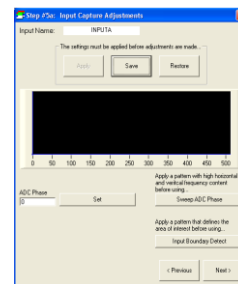
Step #2 Define output timing



#3 Define windowing / scaling / border colors



#4 Define Mixing and Color Adjust



#5 Input Capture Adjust

EZblend Specifications

Input Specifications (Subject to change without notice)

Video Type	Standard: Analog RGB (0.7 Volt levels), Interlaced or non-interlaced, TMDS Optional: NTSC/PAL composite, S-Video via NTSC/PAL option (121-BT only)
Pixel Rate	Up to 165 MHz
Clocks per Line	Up to 4096 (Note 1)
Lines per frame	Up to 2048
Sync Type	HV, Composite Sync, or Sync-on-Green
Phase Adjustments	Sample clock can be adjusted to ensure center sampling
Connectors	DVI-I (DVItoHD-15 adapters included)

Note 1. An internal filter is 1600 active pixels, so either input active or output active pixels must be less than or equal to 1600. Therefore, 1080P for input AND output is not supported

Output Specifications

Video Type	Standard: Analog RGB (0.7 Volt levels), Interlaced or non-interlaced, TMDS
Output Synchronization	Free Running or FRD genlock to an input
Pixel Rate	Up to 165 MHz (<135 MHz if FRD genlock is used)
Clocks per Line	Up to 4096
Lines per frame	Up to 2048
Sync Type	HV, Composite Sync, or Sync-on-Green
Connectors	DVI-I (DVItoHD-15 adapters included)

Electro Mechanical

Input Power	IEC Connector, 100-240 VAC, 47-63 Hz, less than 60 Watts
Control	RS-232, USB, Optional Ethernet
Size (221 and 121)	19"W x 10.25"D x 1.75"H (1U)
Size (121-BT)	10.5W x 10.0D x 2.25H
Weight	Less than 5 lbs.

Environmental

Temperature	Operating 0°C to +50°C; Storage -20°C to +70°C
Relative Humidity	0 to +95%, non-condensing

Warranty

Functional	Blending capabilities	One year
	Specialty Features	Alpha blend, RGB Key, HSV key, Windowing, Split Screen, PIP, Stereo Output, more Programmable border colors and single color substitution for overlaid video
	Color processing depth	8 bits per color
	Re-sizing limits	50% horizontal shrink, 50% vertical shrink

Included documentation and software

Users Guide, Command Line Manual, and EZsetup utility software and manual

Ordering Information:

The EZblend configurations are specified via a part number and options identified by a colon (eg :BT). Options include:

:BT	benchtop enclosure with feet installed (121 only)
:NA	NTSC/PAL input option installed on input A (121:BT only)
:NB	NTSC/PAL input option installed on input B (121:BT only)
:E	Ethernet interface installed
:DRM	Dual Rackmount ears (additional set of ears for connector end)

Some typical part numbers are shown below:

EZblend 221	EZblend 221
EZblend 221:E	EZblend 221 with Ethernet interface
EZblend 121:BT:E	EZblend 121 in Benchtop configuration with Ethernet interface
EZblend 121:BT:E:NA:NB	EZblend 121 in Benchtop configuration, Ethernet interface, NTSC/PAL on input A, NTSC/PAL on input B
EZblend 221 :DRM	EZblend 221 with Dual Rackmount Ears

Included with each unit:

- Power Cord, Serial Cable, USB cable, DVItoHD15 adapters (3 for 121, 6 for 221),

Applications include:

- √ Overlaying symbology on background video for simulated cockpit displays.
- √ Combining dual projector video for remote monitor viewing.
- √ 3-D stereoscopic outputs
- √ Small area blending of background and symbology for HUD simulation.
- √ Security and specialty applications with custom windowing or blending requirements.

To find out if EZblend is right for your application, please contact our application specialists at 636-300-5164.