

T-Soak LCD Burn-In Tester

LCD Tester that can drive up to four displays simultaneously for burn-in or side-by-side comparison.

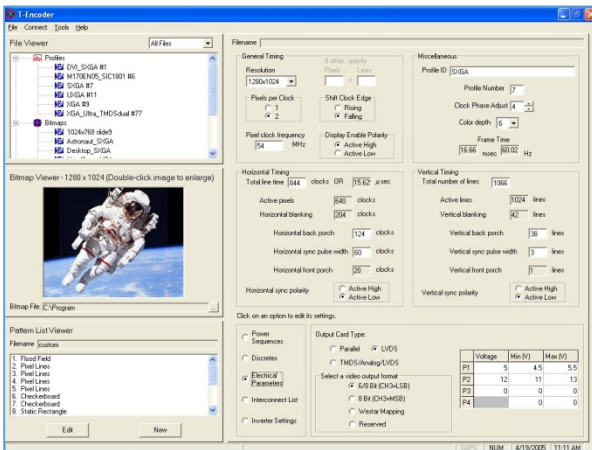


T-Soak™ LCD Burn-In Tester

Whether burning in your “no failure found” LCDs or comparing several LCDs side by side, T-Soak is the affordable solution to drive multiple LCD panels simultaneously. T-Soak outputs four (4) channels of LVDS or four (4) channels of TMDS / Analog depending on your configuration.

Powerful Configuration Software

T-Encoder™ helps you to manage the timing profiles and pattern lists stored in your T-Soak. T-Encoder includes an easy to use editor to create timing/electrical module profiles and pattern lists. Profiles and pattern lists are easily downloaded to T-Soak via USB.



Enhanced Pattern Generation

T-Soak generates an extensive array of test patterns. You can create a unique list of these generated patterns for your unique testing needs. Within this list, you can adjust the color, intensity, and position of the patterns to suite your specific tests.

Each T-Soak Includes

- T-Soak with four Dual LVDS output cards
- Storage for 40 images
- Handheld Keypad
- USB Cable
- T-Encoder™ Software with User's Manual

Features

Standard Features

- Four channels of LVDS video
- Digital video up to UXGA
- Programmable VCC for each LCD
- Power sequencing
- Bitmap download and display
- Control of display specific features
- Power measurements
- Factory default pattern list, user-defined pattern lists and auto pattern sequencing

Generated Test Patterns

- Full Screen Color
- 1 Pixel Horizontal Line
- 2 Pixel Horizontal Line
- Static Rectangle
- 1 or 2 Pixel Checkerboard
- 4 Color Horizontal Wedge
- Horizontal Gray Scale
- Response Time Animation
- Border
- 1 Pixel Vertical Line
- 2 Pixel Vertical Line
- Moving Rectangle
- Blink
- 4 Color Vertical Wedge
- Vertical Gray Scale
- Movable Crosshair

Optional Features

- TMDS / Analog output cards
- Single Pixel TTL output cards
- Interconnect services
- Windows DLL for remote control

Applications

- LCD Comparative Analysis
- Burn-In Testing for production verification
- Automated Optical Test

T-Soak LCD Burn-In Tester

Video Timing	Specification
Horizontal (clocks per line)	
Total	Up to 2047
Active	8 to 2039
Back Porch (HBP)	1 clk increment
Front Porch (HFP)	1 clk increment
Sync Pulse Width (HSPW)	1 clk increment
Vertical (lines per frame)	
Total	Up to 2047
Active	1 to 2039
Back Porch (VBP)	1 line increment
Front Porch (VFP)	1 line increment
Sync Pulse Width (VSPW)	1 line increment
Video Output	
Dual LVDS	
Bits per Pixel	8 bits each RGB
Pixels per Clock	1 or 2
Clock Frequency	20 to 85 MHz (effectively up to 170M pixels/sec for 2 pixels/clock)
TTL (optional)	
Bits per Pixel	8 bits each RGB
Pixels per Clock	1 or 2
Clock Frequency	1.5625 to 85 MHz (effectively up to 170M pixels/sec for 2 pixels/clock)
TMDS (optional)	
Bits per Pixel	8 bits each RGB
Pixels per Clock	1
Clock Frequency	25 to 165 MHz
Analog (optional)	
Bits per Pixel	8 bits each RGB
Pixels per Clock	1
Clock Frequency	1.5625 to 165 MHz

Notes

¹Accuracy specified @ 0A. Use the following equation to determine the actual voltage out:

$$\text{Voltage Out} = \text{Programmed voltage} - (0.05 * \text{current draw in amps})$$

Test Patterns	Specification
Standard Test Patterns	<ul style="list-style-type: none"> • Full Screen Color • 1 or 2 Pixel Horizontal Line • 1 or 2 Pixel Vertical Line • Movable Crosshair • 4 Color Horizontal or Vertical Wedge • Horizontal or Vertical Gray Scale • Static or Moving Rectangle • 1 or 2 Pixel Checkerboard • Border • Response Time Animation • Blink
Storage Capacity	
Pattern List	16 lists of up to 32 patterns
Timing Profile	250
Bitmap	(Standard) 256MB: 40 UXGA Images (Optional) 512MB: 80 UXGA Images
Power Generation, Switching, and Sequencing	
Panel VCC	2.5 to 18 VDC, up to 2.0 Amp
Power Supply Accuracy ¹	greater of 150mV and +/- 3%
Total Deliverable Power	Up to 50 Watts
Switching Time	<1 msec (typical)
Power Sequence Delay	From 1 to 10000 msec, 1 msec increment
Measurement Accuracy	+/-60mV, +/-60mA
Measurement Precision	0.1V, 0.01A
Discretes	8 Out, 3.3VDC or 5 VDC TTL
System	
Dimensions	Height: 5.75" (146.05 mm) Length: 12.75" (323.85 mm) Depth: 7.75" (196.85 mm)
Weight	6 Lbs. (2.6 Kg)
Power	88 to 132VAC or 176 to 264VAC, 150 W max, Auto Select Frequency from 47 to 63 Hz
System Support & Warranty	
Warranty	1 Year Limited Warranty
Technical Support	Phone and Email Support Available

Tooling Services Available

To get your LCD connected to T-Soak quickly and easily, ask about our tooling service.

Contact Us to Get Started

Call or email us for additional product information and pricing. We will work with you one-on-one to deliver an LCD tester that meets your unique requirements!

+1 (636) 300-5116